

# Magnificat

Randy Gill, 2003

$\text{♩} = 100$   
**E#<sup>2</sup>/E#**  
*Soprano*

Mag-ni - fi - ca mi<sub>al</sub> - ma<sub>al</sub> Se - ñor, \_\_\_\_\_

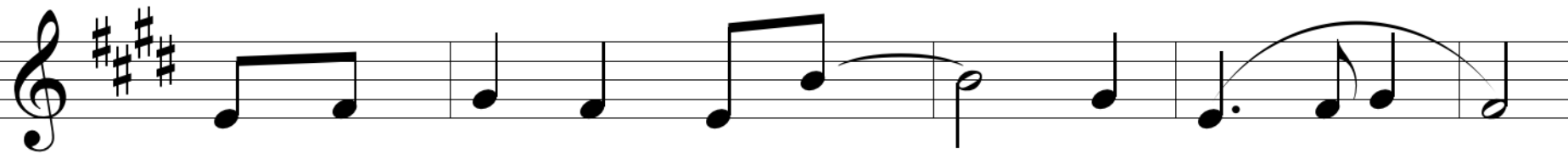
=

# 1-b Magnificat

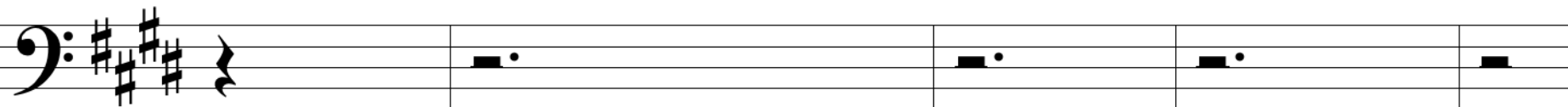
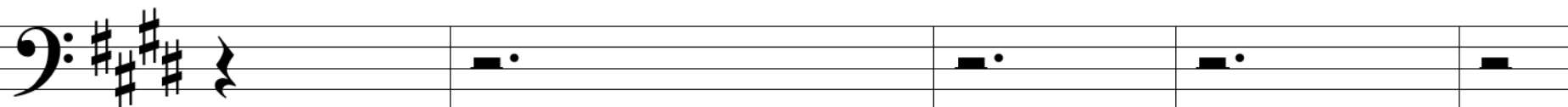
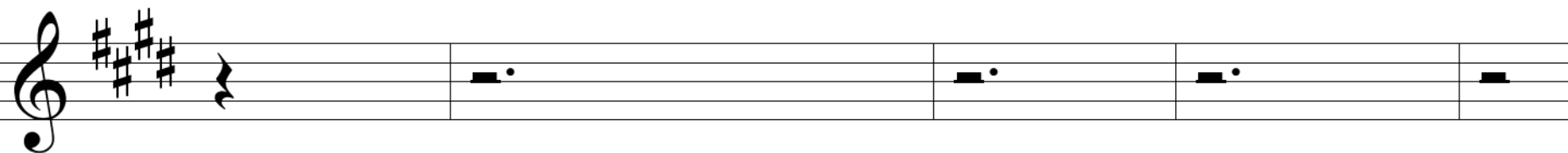
The image shows a musical score for a Magnificat. It consists of four staves. The top staff is a vocal line in treble clef with a key signature of three sharps (F#, C#, G#). The lyrics are: "y mi es-pí - ri - tu se go-za en Dios, mi Sal-va-dor;". The second and third staves are piano accompaniment in treble and bass clefs, respectively. The fourth staff is another piano accompaniment in bass clef. The score is divided into four measures. The first measure contains the vocal melody and piano accompaniment. The second and third measures contain piano accompaniment. The fourth measure contains piano accompaniment.

y mi es-pí - ri - tu se go-za en Dios, mi Sal-va-dor;

# 1-c Magnificat



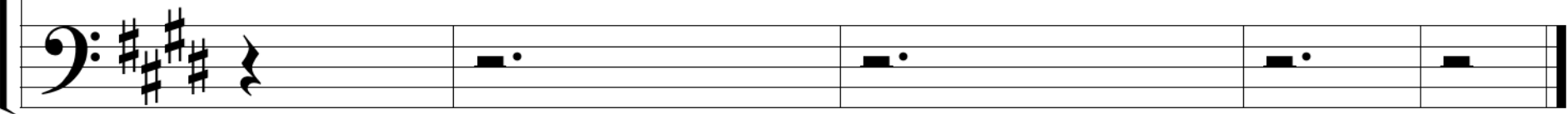
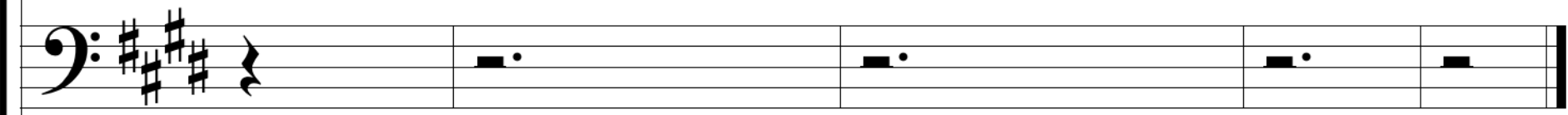
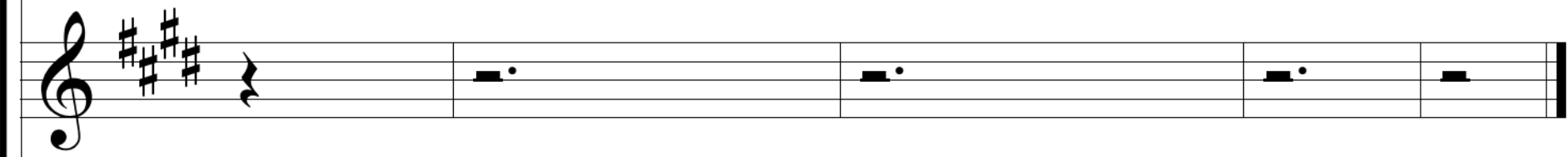
glo - ri - fi - ca mi al - ma al Se - ñor,



# 1-d Magnificat



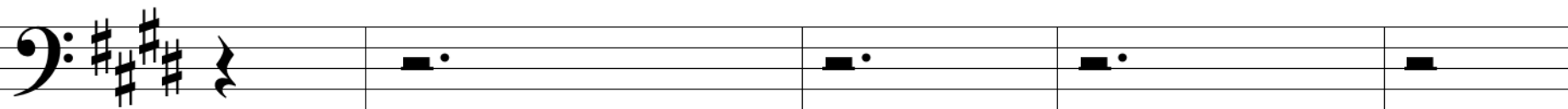
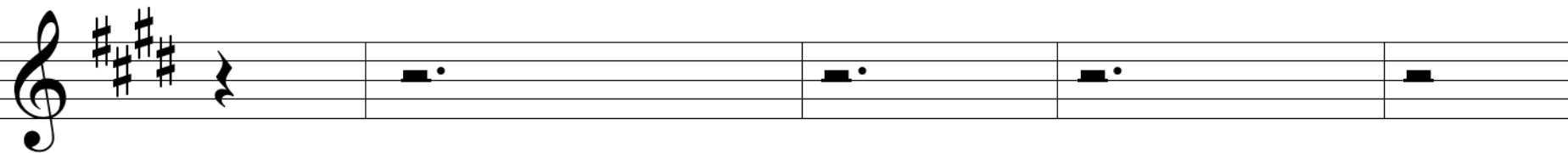
y mi\_es - pí - ri - tu se go - za\_en Dios.



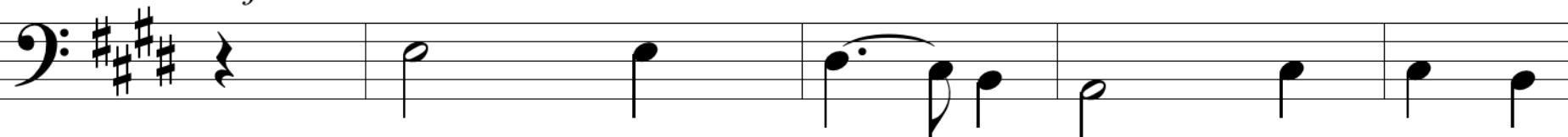
# 2-a Magnificat



Mag-ni - fi - ca mi-al-ma-al Se - ñor, \_\_\_\_\_



*Bajo*



Glo - ria sea a Dios el Pa - dre,

# 2-b Magnificat

Musical staff with treble clef and key signature of three sharps (F#, C#, G#). The staff contains a melodic line with eighth and quarter notes, including a fermata over a quarter note.

y mi\_es - pí - ri - tu se\_\_\_ go - za\_en Dios, mi\_\_\_ Sal - va - dor;

Musical staff with treble clef and key signature of three sharps. The staff contains a series of rests, with a fermata over a dotted quarter rest in the second measure.

Musical staff with bass clef and key signature of three sharps. The staff contains a series of rests, with a fermata over a dotted quarter rest in the second measure.

Musical staff with bass clef and key signature of three sharps. The staff contains a melodic line with quarter and half notes, including a fermata over a half note.

y glo - ria sea\_\_\_ a su Hi - jo;\_\_\_\_\_

# 2-c Magnificat

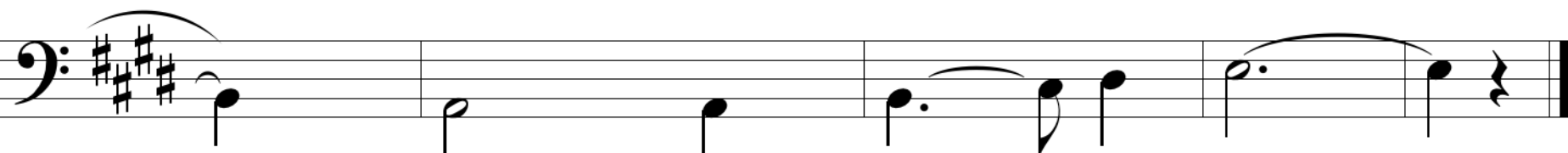
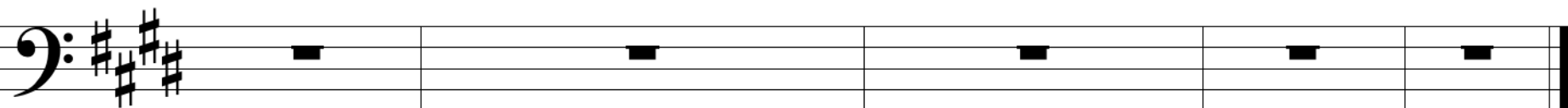
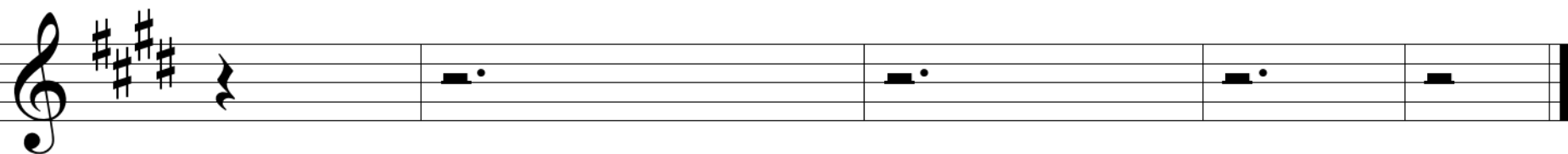
glo - ri - fi - ca mi - al - ma al Se - ñor, \_\_\_\_\_

— Glo - ria al San - to Es - pí - ri - tu, -

# 2-d Magnificat

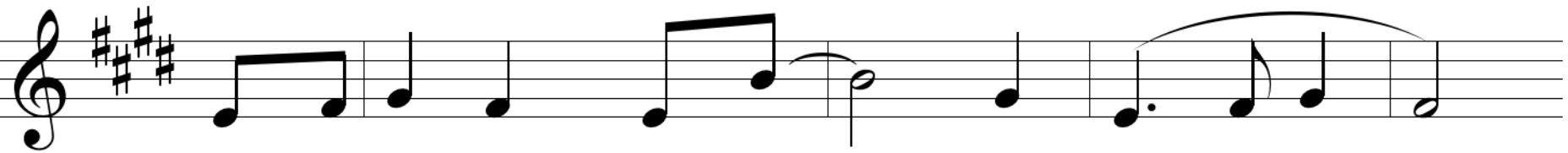


y mi\_es - pí - ri - tu se go - za\_en Dios.

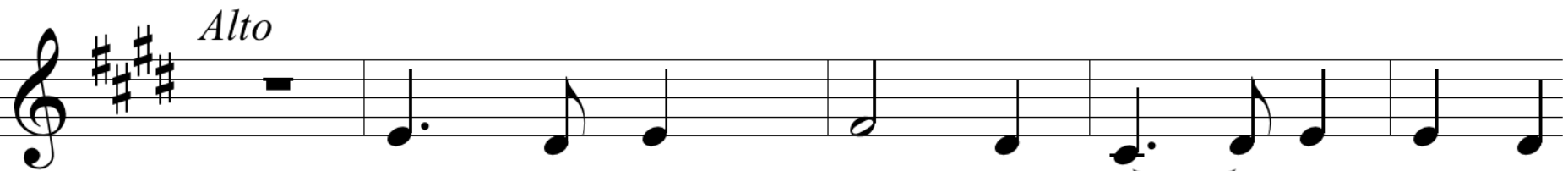


- - glo - ria sea a Dios.

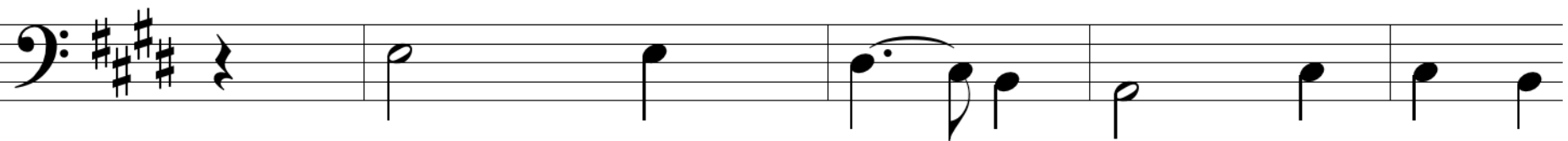
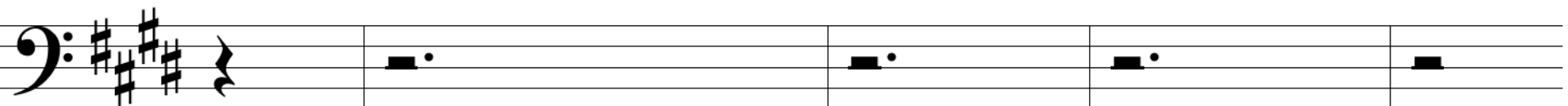
# 3-a Magnificat



Mag - ni - fi - ca mi - ma - al Se - ñor, \_\_\_\_\_



*Alto*  
Con su Gra - cia me - ha con - tem - pla - do,

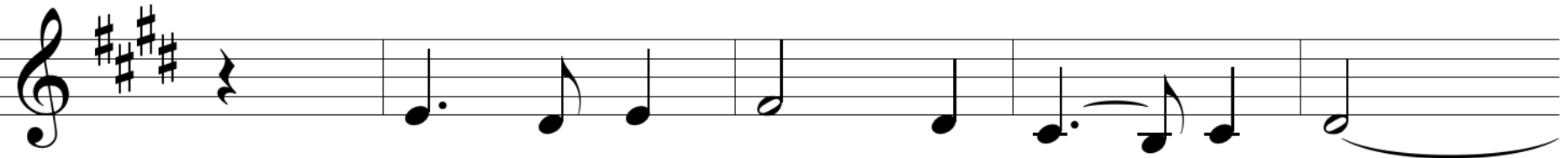


Glo - ria sea a Dios el Pa - dre,

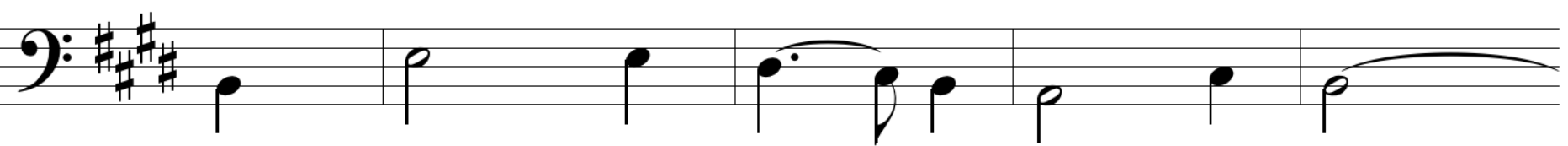
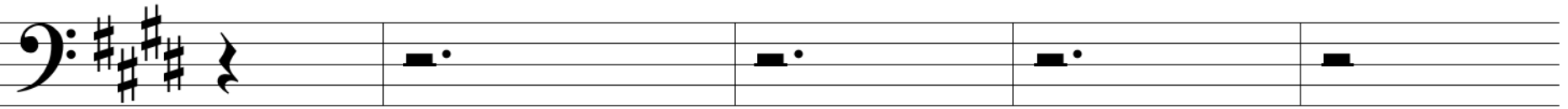
### 3-b Magnificat



y mi es - pí - ri - tu se go - za en Dios, mi Sal - va - dor;



pu - so el Se - ñor su vis - ta en mí;



y glo - ria sea a su Hi - jo;

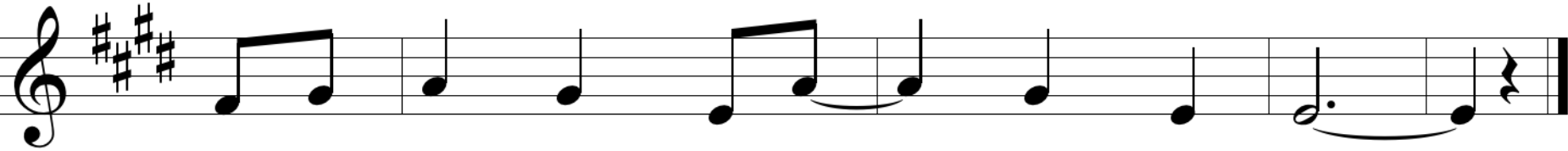
# 3-c Magnificat

glo - ri - fi - ca mi al - ma al Se ñor, \_\_\_\_\_

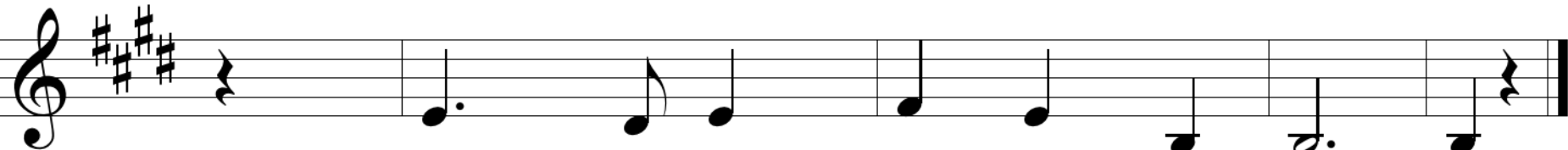
— Su ben - di - ción ten - dré yo por siem - pre,

— Glo - ria al San - to Es - pí - ri tu, \_\_\_\_\_

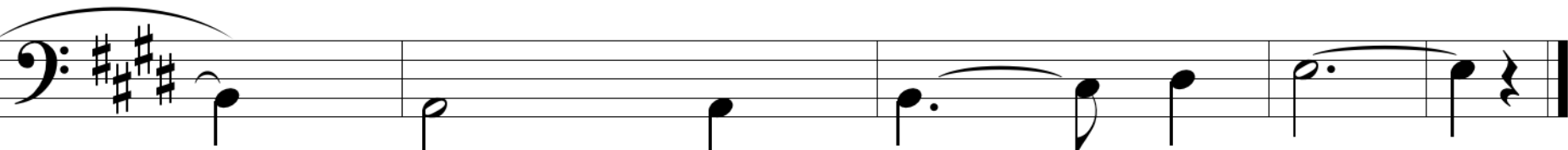
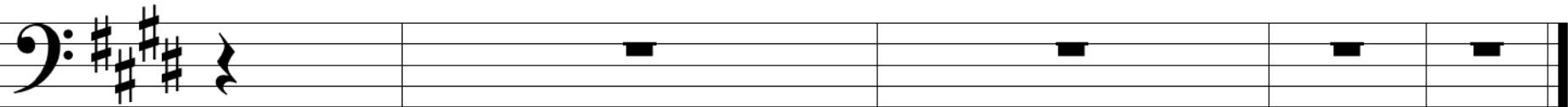
# 3-d Magnificat



y mi<sub>2</sub>es - pí - ri - tu se\_\_\_ go - za<sub>2</sub>en Dios.\_\_\_\_



siem - pre me ben - de ci - rá.\_\_\_\_



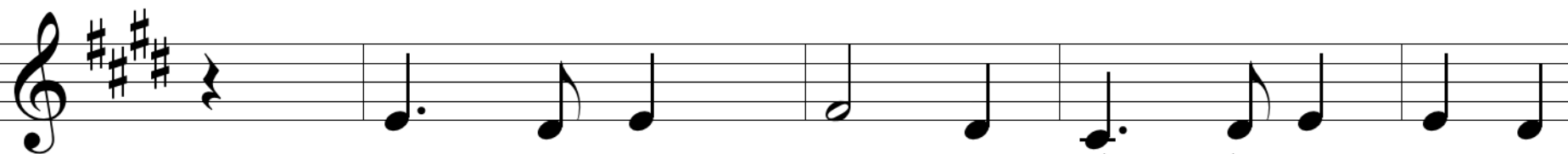
— glo - ria sea\_\_\_ a Dios.\_\_\_\_

# 4-a Magnificat



Musical staff for Soprano, treble clef, key signature of three sharps (F#, C#, G#). The melody begins with a quarter note G4, followed by quarter notes A4, B4, C5, D5, E5, F#5, G5, and A5. A slur covers the final three notes (F#5, G5, A5).

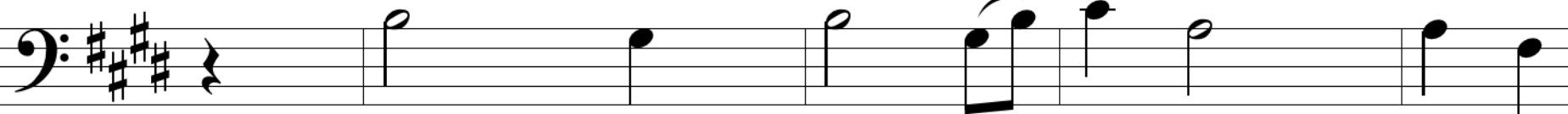
Mag - ni - fi - ca mi al - ma al Se - ñor, \_\_\_\_\_



Musical staff for Alto, treble clef, key signature of three sharps. The melody begins with a quarter rest, followed by quarter notes G4, A4, B4, C5, D5, E5, F#5, G5, and A5. A slur covers the final three notes (F#5, G5, A5).

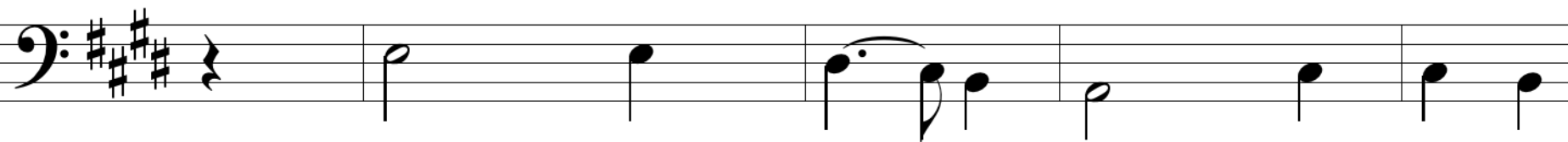
Con su Gra - cia me ha con - tem - pla - do,

*Tenor*



Musical staff for Tenor, bass clef, key signature of three sharps. The melody begins with a quarter rest, followed by quarter notes G3, F#3, E3, D3, C3, B2, and A2.

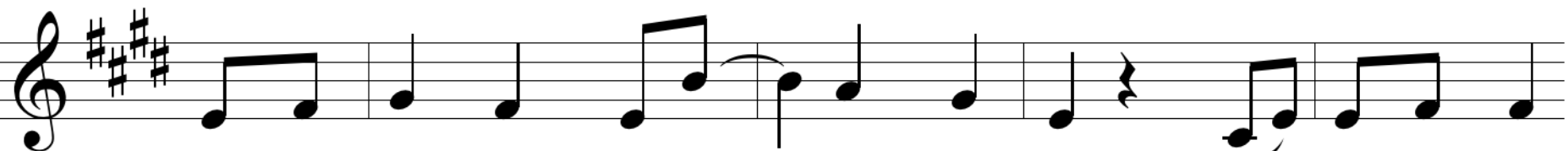
Só - lo Dios es po - de - ro - so,



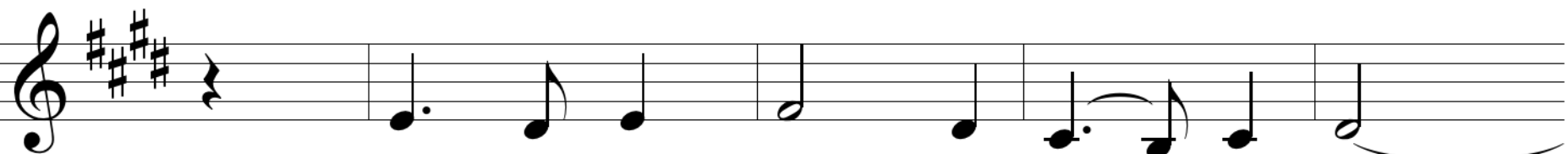
Musical staff for Bass, bass clef, key signature of three sharps. The melody begins with a quarter rest, followed by quarter notes G3, F#3, E3, D3, C3, B2, and A2. A slur covers the final three notes (E3, D3, C3).

Glo - ria sea a Dios el Pa - dre,

# 4-b Magnificat



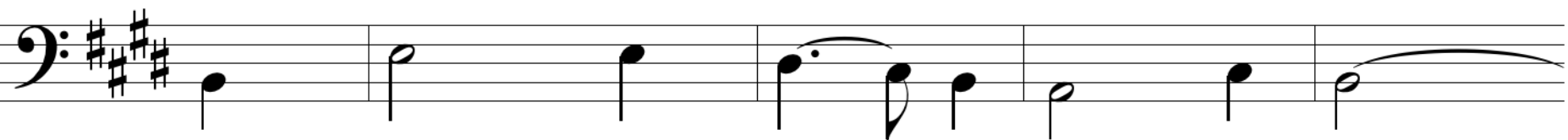
y mi es-pí - ri - tu se go - za en Dios, mi Sal - va - dor;



pu - so el Se - ñor su vis - ta en mí;



só - lo Dios es po - de - ro - so;

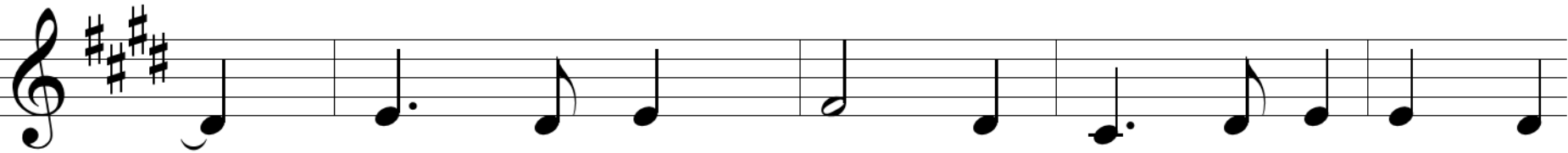


y glo - ria sea a su Hi - jo;

# 4-c Magnificat



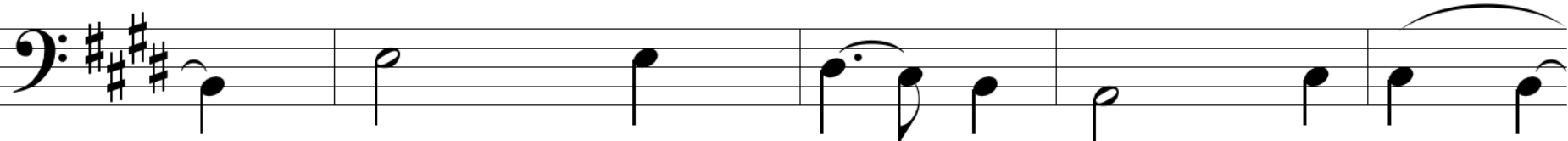
glo - ri - fi - ca mi\_al - ma\_al Se - ñor, \_\_\_\_\_



— Su ben - di - ción ten - dré yo por siem - pre,



Só - lo ÉI es dig - no, dig - no,

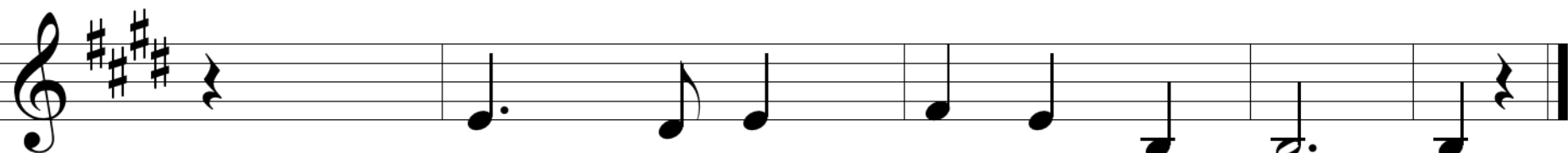


— Glo - ria\_al San - to\_Es - pí - ri tu, \_\_\_\_\_

# 4-d Magnificat



y mi<sub>2</sub>es - pí - ri - tu se\_\_\_ go - za<sub>2</sub>en Dios. \_\_\_



siem - pre me ben - de ci - rá. \_\_\_



glo - ria se - a<sub>2</sub>a Dios. \_\_\_



glo - ria sea\_\_\_ a Dios. \_\_\_

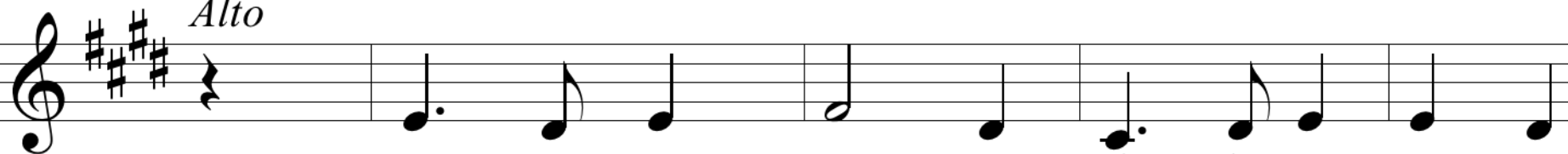
# 5-a Magnificat

*Soprano*



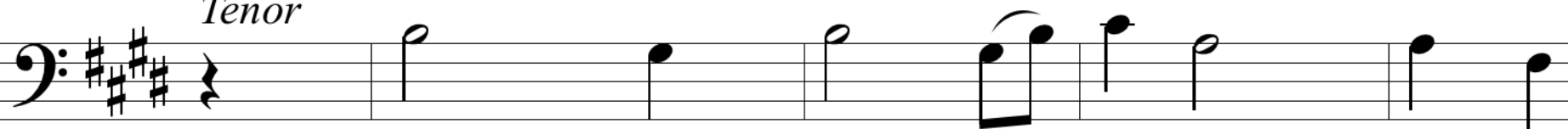
Mag - ni - fi - ca mi al - ma al Se - ñor, \_\_\_\_\_

*Alto*



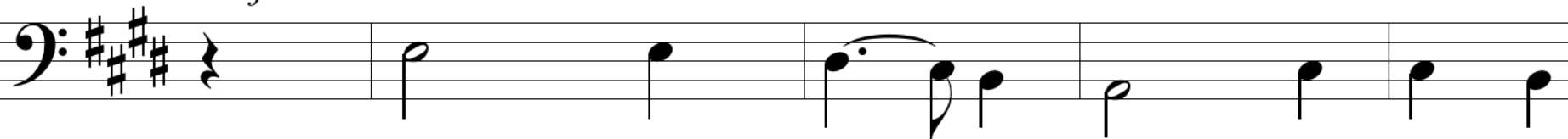
Con su Gra - cia me ha con - tem - pla - do,

*Tenor*



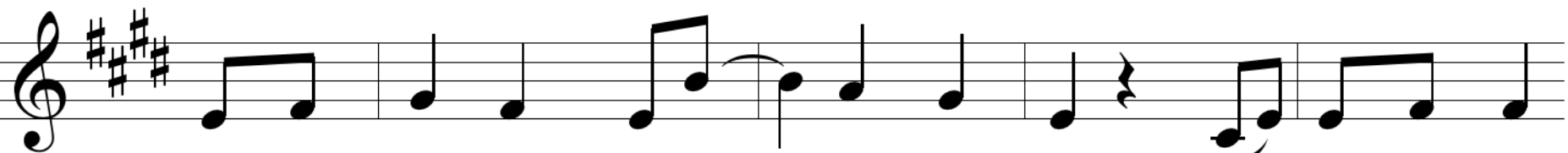
Só - lo Dios es po - de - ro - so,

*Bajo*

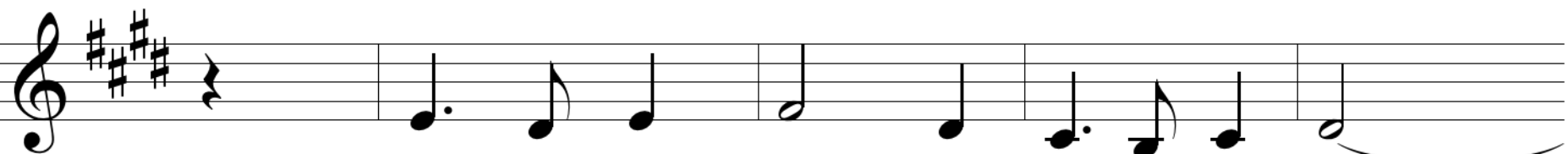


Glo - ria sea a Dios el Pa - dre,

# 5-b Magnificat



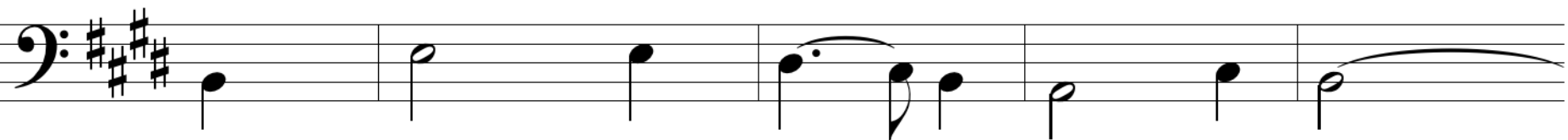
y mi es - pí - ri - tu se — go za en Dios, mi Sal - va - dor;



pu - so el Se - ñor su vis - ta en mí; \_\_\_\_\_

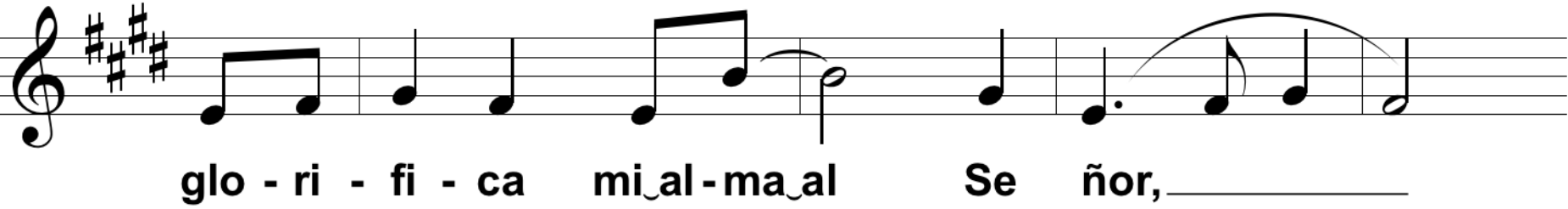


só - lo Dios es po - de - ro - so;



y glo - ria sea a su Hi - jo; \_\_\_\_\_

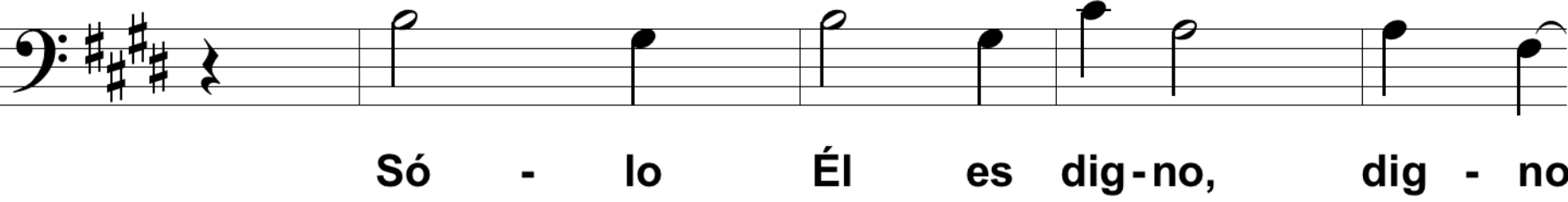
# 5-c Magnificat



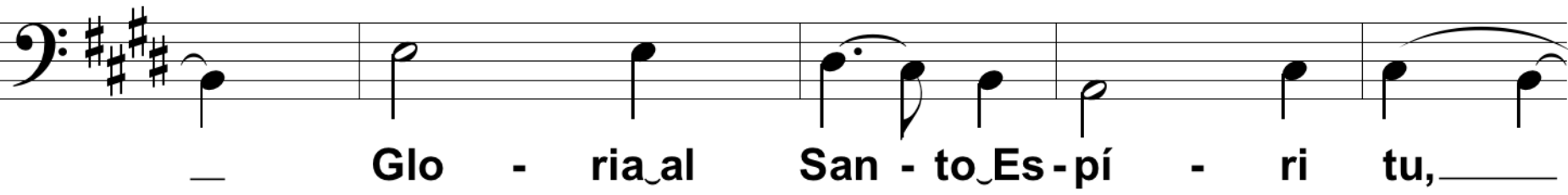
glo - ri - fi - ca mi al - ma al Se ñor, \_\_\_\_\_



— Su ben - di - ción ten - dré yo por siem - pre,



Só - lo Él es dig - no, dig - no,



— Glo - ria al San - to Es - pí - ri tu, \_\_\_\_\_

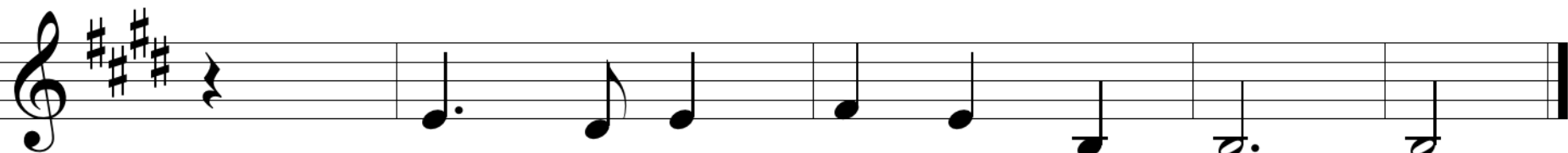
# 5-d Magnificat



y mi\_es pí - ri - tu se

go za\_en

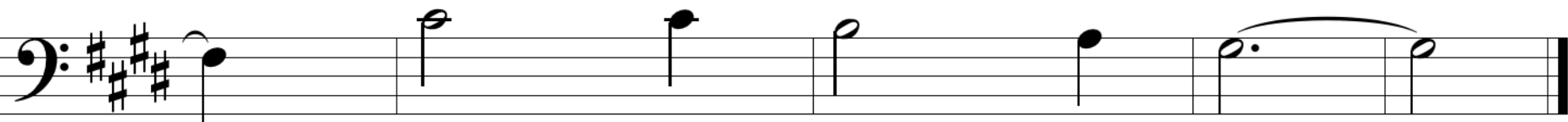
Dios.



siem - pre me

ben - de

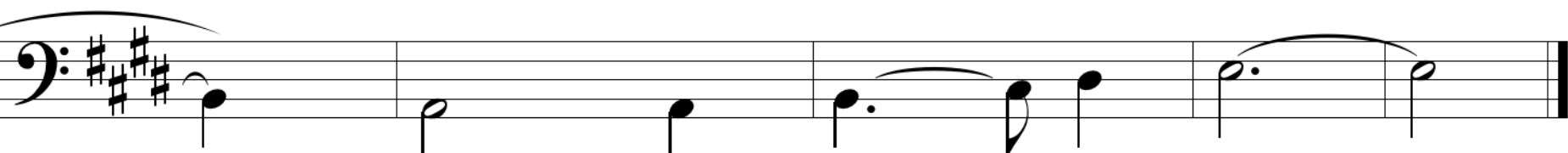
ci - rá.



glo - ria

se - a\_a

Dios.



glo - ria

sea\_a

Dios.